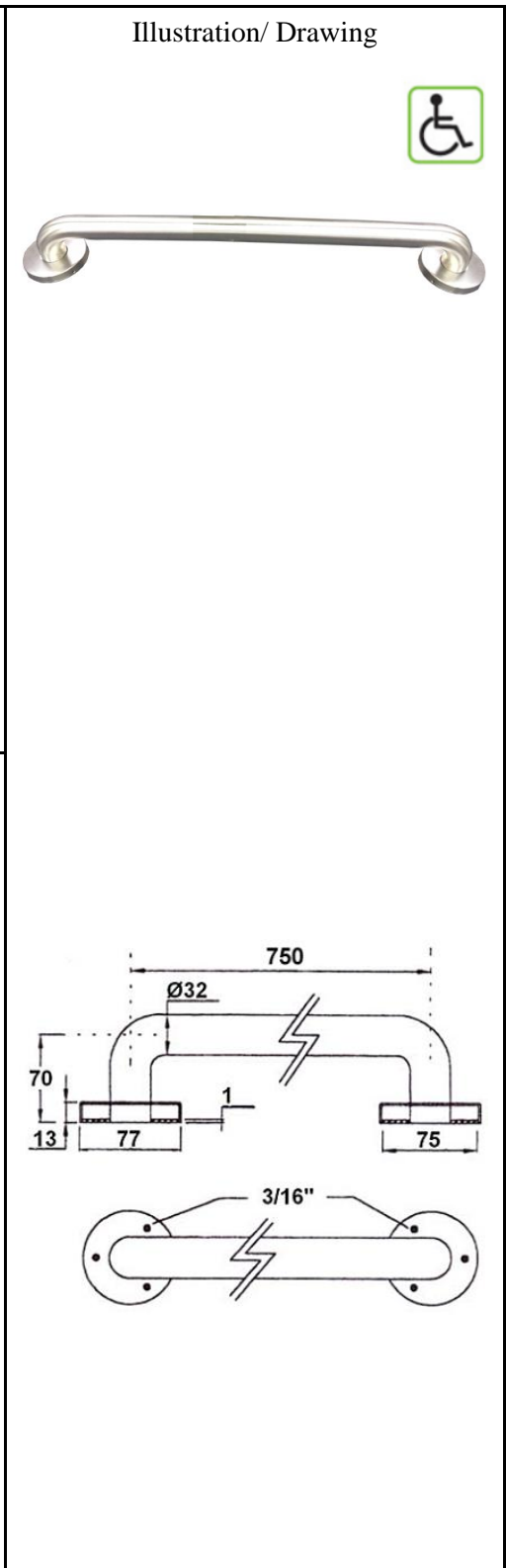
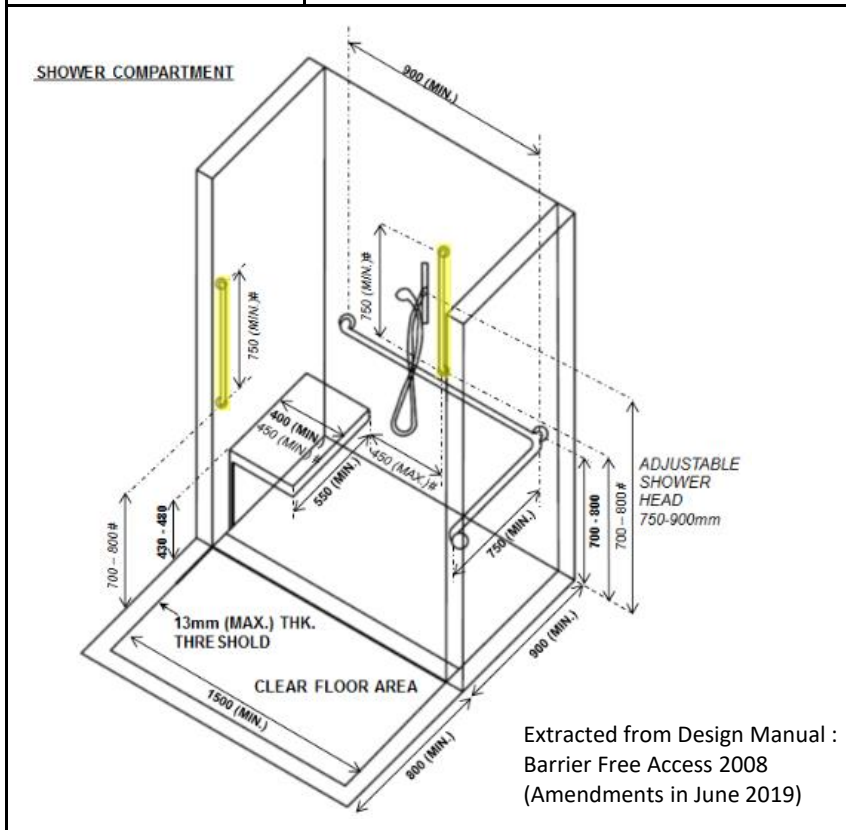




PROJECT		REF		REV	ITEM CODE	
LOCATION		DATE			PAGE	

SANITARY WARE SPECIFICATION SHEET

Item Descriptions	EMCA (PRC) Ø32 x 750mm long stainless steel 304 grab bar in satin finish; GB 175-2007; capable of carrying a static loading test 150kg ; test report J28242 ; complied with Barrier Free Access 2008	<p style="text-align: center;">Illustration/ Drawing</p> <div style="text-align: right;"> </div>
Dimensions	32 diameter x 750 mm	
Model	EM7001.013-750	
Material	Stainless Steel 304	
Manufacturer	EMCA (PRC)	
Source	Acme Sanitary Ware Co. Ltd Mr. Eric Wong/ Mr. Don Yuen	
Contact Tel/Fax	(852) 2388-7171 / (852) 2710-8012	
E-mail	acme@acmesanitary.com.hk	
Website	www.acmesanitary.com.hk	



* All information of the above is for the reference only. No prior notice is made if any changes.

Test Report

TITLE : Loading test

OUR REFERENCE : J 28242

DESCRIPTION OF SAMPLE : Ø32 x 750mm long stainless steel 304 grab bar in satin finish

SAMPLE SUBMITTED BY : Acme Sanitary Ware Co., Ltd.
1/F, Acme Building, 22-28 Nanking Street, Yau Ma Tei,
Kowloon, Hong Kong

BRAND : EMCA

COUNTRY OF ORIGIN : PRC

MODEL : EM7001.013 - 750

METHOD OF TESTS : Loading test

PERIOD OF TESTS : 15 Sep., 2022

RESULTS: (apply only to the sample tested)

1. Load test

The sample was installed onto a concrete wall in its normal application (cement to GB 175-2007). A test load was applied to the mid point of the sample which was then examined for any signs of damage.

	Weight/ downward load (kgf)	Test duration (min)	Break/failure/ deflection/crack	Remark
Sample	150	60	No	Pass
Required	150	60	No	



Date: 10 Oct., 2022

Authorized signature: _____

Nutek Systems is a testing agency,
accepted by the Water Supplies
Department, for testing water supply
fittings.

Chung Siu Yu, Alan
(Engineer)

REPORT NO.: J28242



Figure 1 - Sample



- End of report-